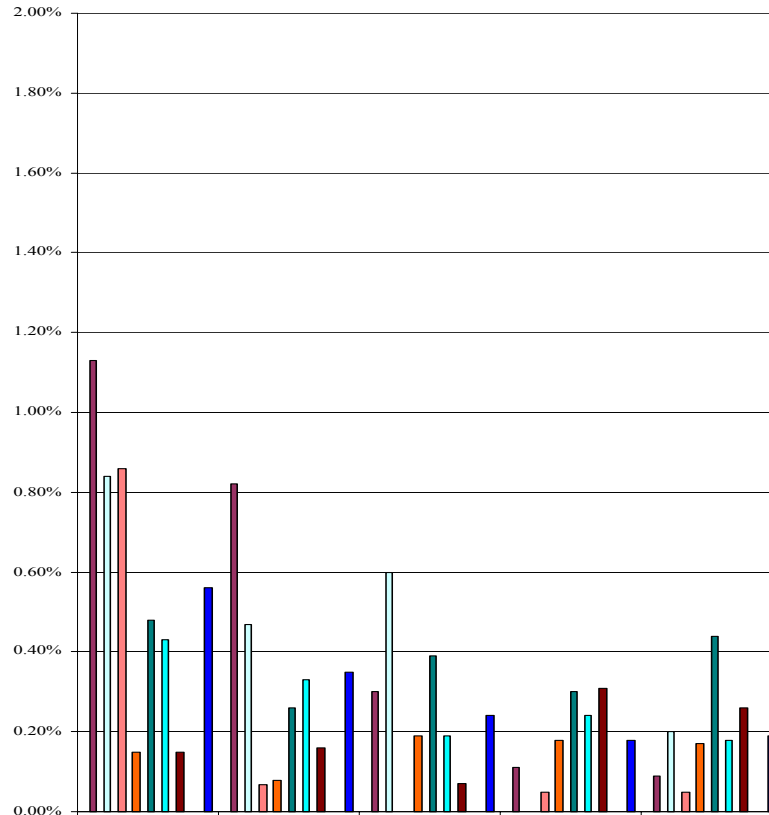


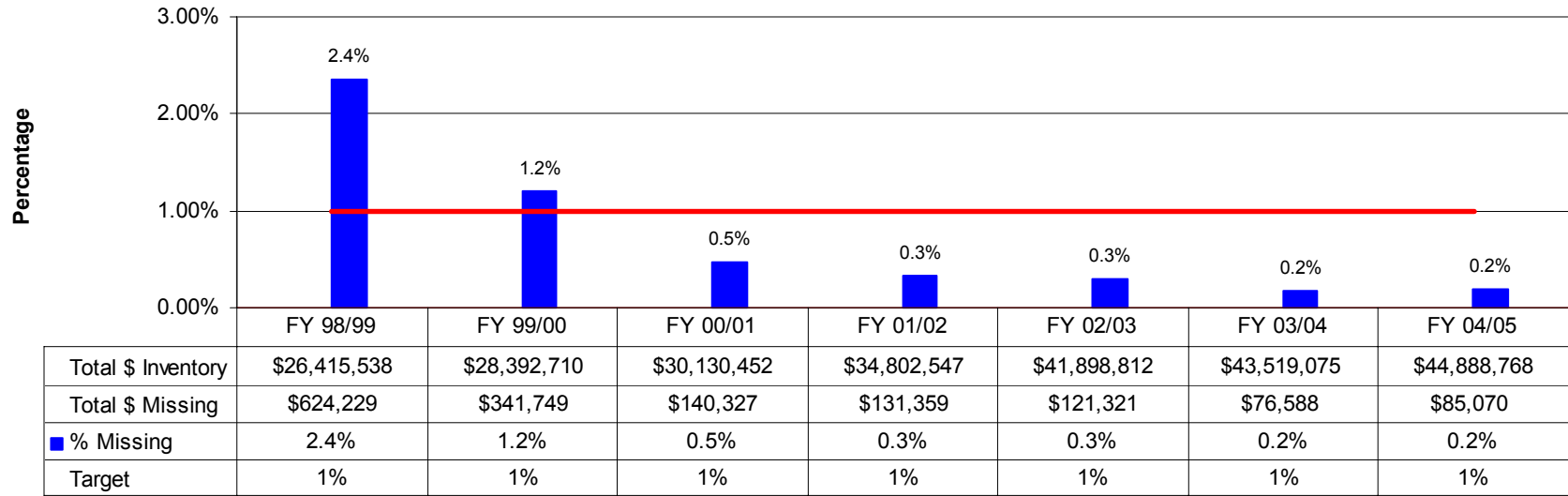
**Fiscal Year Property Comparison by Campus (% of # of items lost/misplaced/not found during campus inventory)**

**Goal: To enhance institutional performance and accountability**  
**Objective: To monitor/improve the % of property items not found**  
**(Target: 1%) PC103**



Downtown/Geis/ATC Total/Qty.	28	28	12	5	4
Downtown/Geis/ATC %	1.13%	0.82%	0.30%	0.11%	0.09%
Open Campus Total/Qty.	5	3	4	0	2
Open Campus %	0.84%	0.47%	0.60%	0.00%	0.20%
Deerwood Total/Qty.	13	1	0	1	1
Deerwood %	0.86%	0.067%	0.00%	0.05%	0.05%
South Total/Qty.	4	2	5	5	5
South %	0.15%	0.079%	0.19%	0.18%	0.17%
North/Nassau Total/Qty.	13	7	11	9	13
North/Nassau %	0.48%	0.26%	0.39%	0.30%	0.44%
Kent/Cecil Total/Qty.	7	8	5	6	5
Kent/Cecil %	0.43%	0.33%	0.19%	0.24%	0.18%
Admin/CS/M/S/Surp Total/Qty.	2	2	1	6	5
Admin/CS/M/S/Surp %	0.15%	0.16%	0.07%	0.31%	0.26%
Total # Inventory Items	12,887	14,425	15,625	17,501	18,306
Target	1.0%	1.0%	1.0%	1.0%	1.0%
Total # Missing	72	51	38	32	35
Collegewide %	0.56%	0.35%	0.24%	0.18%	0.19%

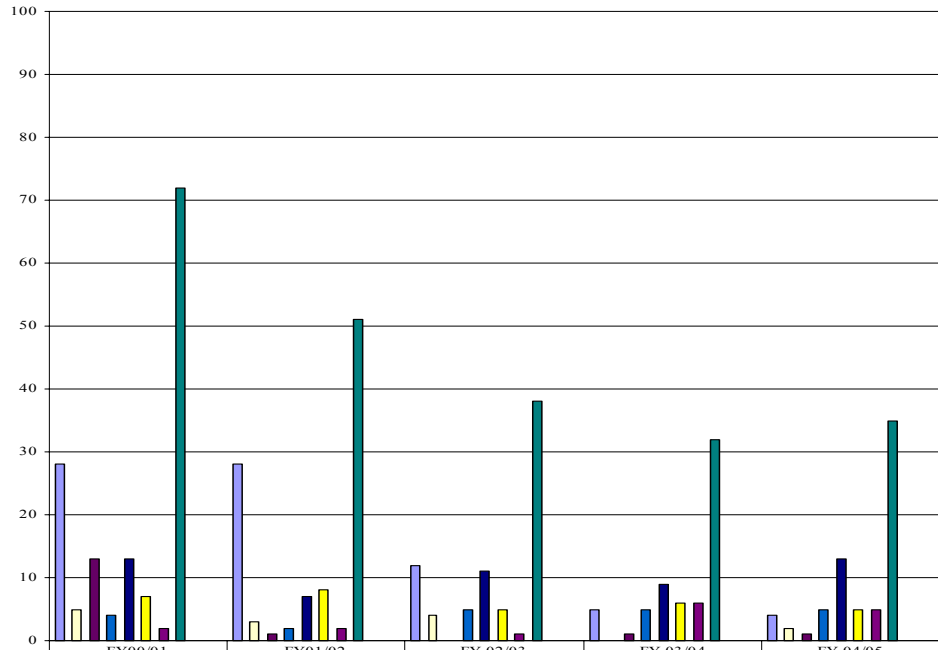
**Overall College Physical Inventory Analysis of Moveable Property by Year**  
 (% of Acquisition value of \$ lost or misplaced or not found during the physical inventory)



**Fiscal Year Property/Final Phase Comparison by Campus (PC 104B)**  
 (% of value (\$) of items lost/misplace/not found)

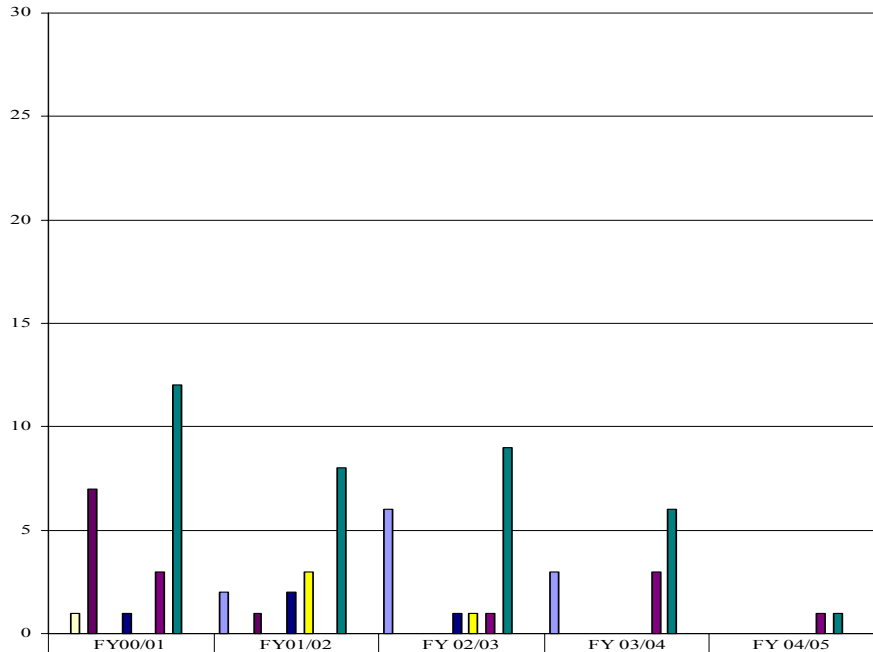
**Goal:** To enhance institutional performance and accountability

**Objective:** To monitor/improve the quantity of property items not found



■ Downtown/Geis(#)	28	28	12	5	4
Downtown/Geis (\$)	\$43,204	\$51,346	\$23,714	\$6,611	\$7,287
□ URC (#)	5	3	4	0	2
URC (\$)	\$10,172	\$5,713	\$9,067	\$0	\$4,186
■ Deerwood (#)	13	1	0	1	1
Deerwood (\$)	\$15,473	\$5,186	\$0	\$794	\$1,534
■ South (#)	4	2	5	5	5
South (\$)	\$3,377	\$2,553	\$5,265	\$11,312	\$11,718
■ North/Nassau (#)	13	7	11	9	13
North/Nassau (\$)	\$22,050	\$10,685	\$18,298	\$14,702	\$20,366
■ Kent (#)	7	8	5	6	5
Kent (\$)	\$11,807	\$14,202	\$9,036	\$7,459	\$9,634
■ Admin/CS/MS/Sur (#)	2	2	1	6	5
Admin/CS/MS/Sur (\$)	\$4,612	\$3,222	\$764	\$8,949	\$11,959
■ Total Qty.	72	51	38	32	35
Target	0	0	\$0	\$0	\$0
Total \$ Missing Target	\$110,695	\$92,908	\$66,144	\$49,827	\$66,684
Total \$ Value as Inventory	\$30,302,051	\$34,802,547	\$40,100,415	\$44,037,128	\$45,371,637
% of Total Inventory	0.36%	0.27%	0.16%	0.11%	0.15%

**Fiscal Year Property/Final Phase Comparison by Campus (PC 105)**  
**(Total value of items stolen)**  
**Goal: To enhance institutional performance and accountability**  
**Objective: To monitor/improve the value of property items reported stolen**  
**(Target: 0%)**



	FY00/01	FY01/02	FY 02/03	FY 03/04	FY 04/05
■ DowntownGeis/ATC (#)	0	2	6	3	0
Downtown/Geis/ATC (\$)	0	\$2,635	\$16,147	\$3,720	0
□ Open Campus (#)	1	0	0	0	0
Open Campus (\$)	\$1,013	0	0	\$0	0
■ Deerwood (#)	7	1	0	0	0
Deerwood (\$)	\$13,515	\$3,200	0	\$0	\$0
■ South (#)	0	0	0	0	0
South (\$)	0	0	0	\$0	0
■ North/Nassu (#)	1	2	1	0	0
North/Nassu (\$)	\$6,550	\$7,038	\$6,495	\$0	\$0
■ Kent/Cecil (#)	0	3	1	0	0
Kent/Cecil (\$)	0	\$3,392	\$5,420	\$0	\$0
■ AdminCS/MS/Surp(#)	3	0	1	3	1
AdminCS/MS/Surp(\$)	\$5,785	\$0	\$1,735	\$8,717	\$815
■ Stolen Totals (#)	12	8	9	6	1
Stolen Total (\$)	\$26,863	\$16,265	\$29,797	\$12,437	\$815
■ % of Total	0.09%	0.047%	0.07%	0.03%	0.002%
□ Target	0	0	0	0	0

