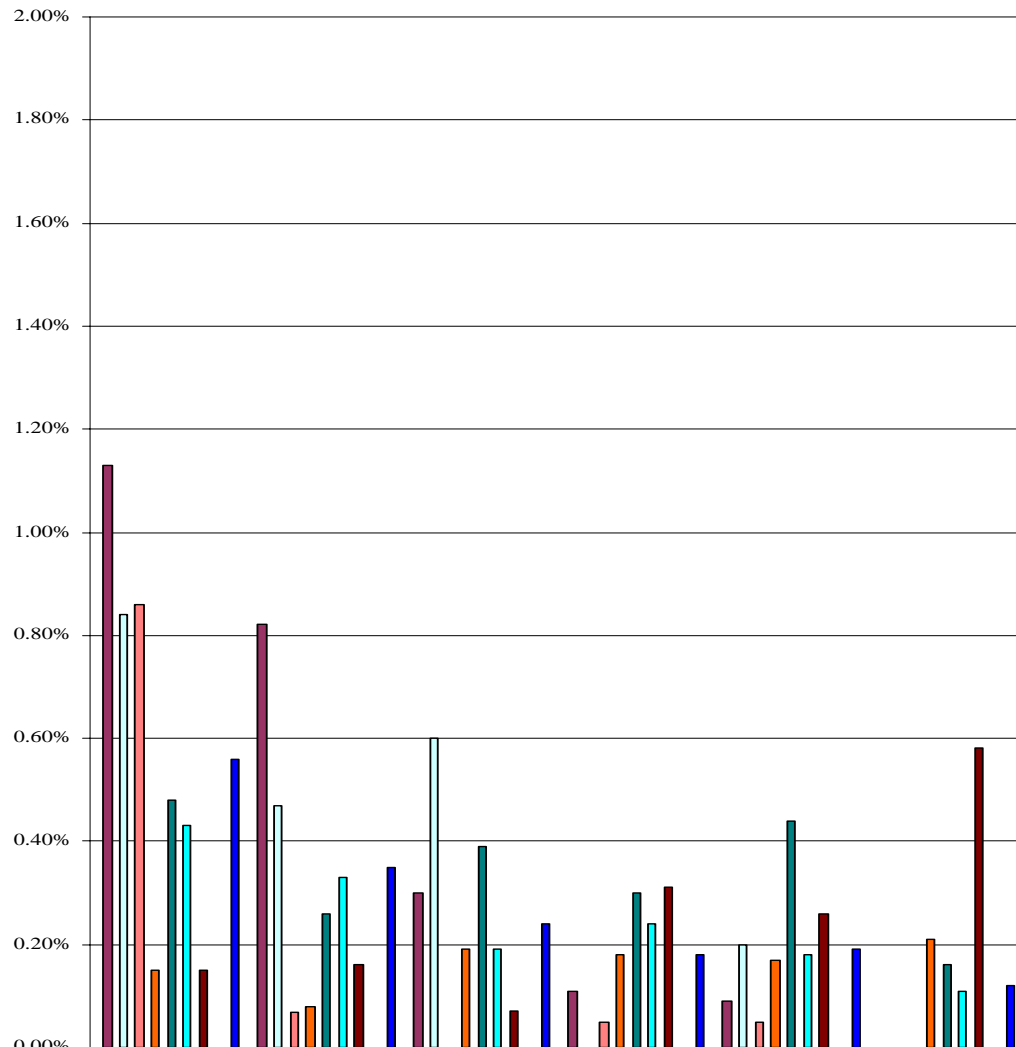


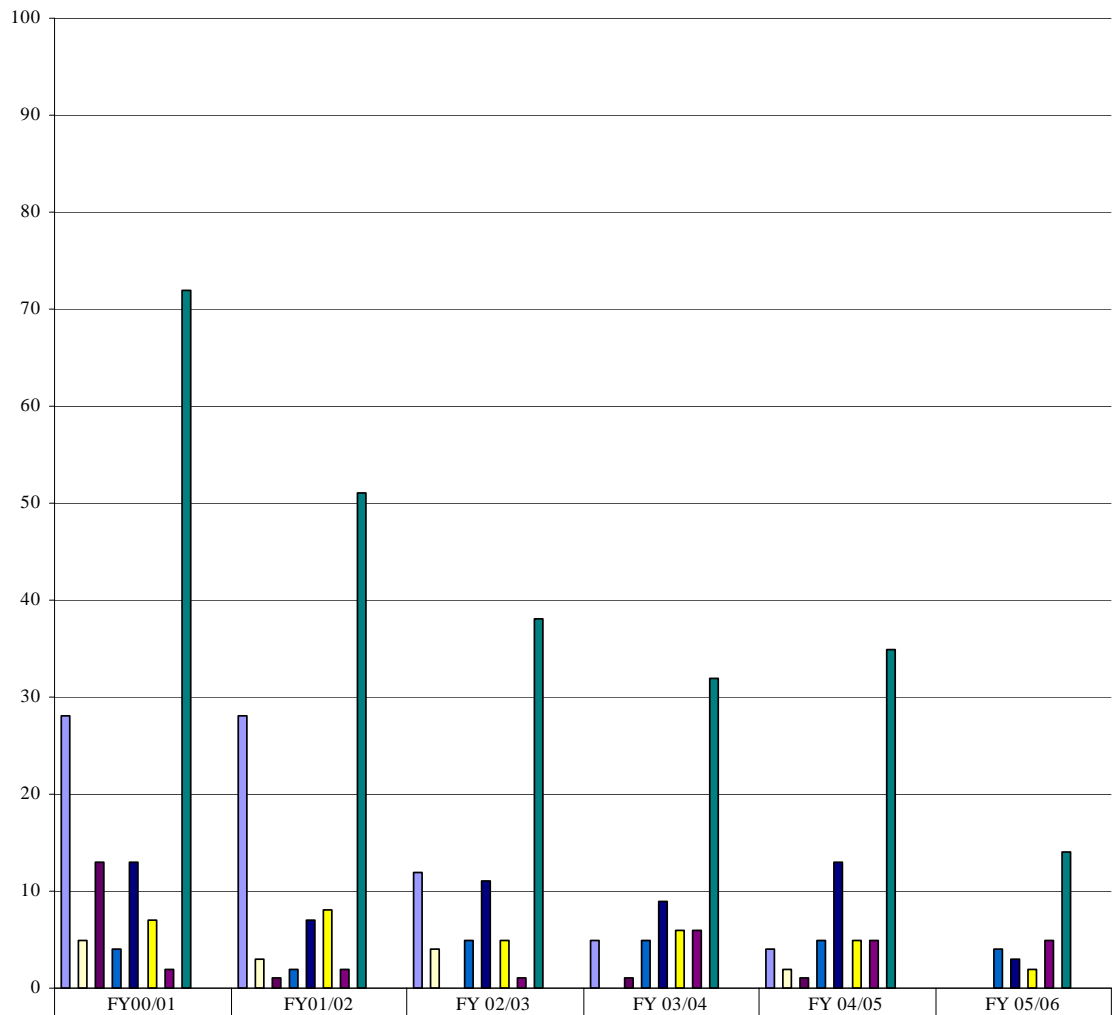
Fiscal Year Property Comparison by Campus (% of # of items lost/misplaced/not found during campus inventory)

Goal: To enhance institutional performance and accountability
Objective: To monitor/improve the % of property items not found
(Target: 1%) PC103



	FY00/01	FY01/02	FY02/03	FY03/04	FY04/05	FY05/06
Downtown/Geis/ATC Total/Qty.	28	28	12	5	4	0
Downtown/Geis/ATC %	1.13%	0.82%	0.30%	0.11%	0.09%	0.00%
Open Campus Total/Qty.	5	3	4	0	2	0
Open Campus %	0.84%	0.47%	0.60%	0.00%	0.20%	0.00%
Deerwood Total/Qty.	13	1	0	1	1	0
Deerwood %	0.86%	0.067%	0.00%	0.05%	0.05%	0.00%
South Total/Qty.	4	2	5	5	5	4
South %	0.15%	0.079%	0.19%	0.18%	0.17%	0.21%
North/Nassau Total/Qty.	13	7	11	9	13	3
North/Nassau %	0.48%	0.26%	0.39%	0.30%	0.44%	0.16%
Kent/Cecil Total/Qty.	7	8	5	6	5	2
Kent/Cecil %	0.43%	0.33%	0.19%	0.24%	0.18%	0.11%
Admin/CS/MS/Surp Total/Qty.	2	2	1	6	5	5
Admin/CS/MS/Surp %	0.15%	0.16%	0.07%	0.31%	0.26%	0.58%
Total # Inventory Items	12,887	14,425	15,625	17,501	18,306	11,682
Target	1.0%	1.0%	1.0%	1.0%	1.0%	1.0%
Total # Missing	72	51	38	32	35	14
Collegewide %	0.56%	0.35%	0.24%	0.18%	0.19%	0.12%

Fiscal Year Property/Final Phase Comparison by Campus (PC 104B)
 (% of value (\$) of items lost/misplaced/not found)
Goal: To enhance institutional performance and accountability
Objective: To monitor/improve the quantity of property items not found



	FY00/01	FY01/02	FY 02/03	FY 03/04	FY 04/05	FY 05/06
■ Downtown/Geis(#)	28	28	12	5	4	0
Downtown/Geis (\$)	\$43,204	\$51,346	\$23,714	\$6,611	\$7,287	\$0
□ URC (#)	5	3	4	0	2	0
URC (\$)	\$10,172	\$5,713	\$9,067	\$0	\$4,186	\$0
■ Deerwood (#)	13	1	0	1	1	0
Deerwood (\$)	\$15,473	\$5,186	\$0	\$794	\$1,534	\$0
■ South (#)	4	2	5	5	5	4
South (\$)	\$3,377	\$2,553	\$5,265	\$11,312	\$11,718	\$7,810
■ North/Nassai (#)	13	7	11	9	13	3
North/Nassau (\$)	\$22,050	\$10,685	\$18,298	\$14,702	\$20,366	\$6,640
■ Kent (#).	7	8	5	6	5	2
Kent (\$)	\$11,807	\$14,202	\$9,036	\$7,459	\$9,634	\$3,259
■ Admin/CSMS/Sur (#)	2	2	1	6	5	5
Admin/CSMS/Sur (\$)	\$4,612	\$3,222	\$764	\$8,949	\$11,959	\$13,367
■ Total Qty.	72	51	38	32	35	14
Target	0	0	\$0	\$0	\$0	\$0
Total \$ Missing Target	\$110,695	\$92,908	\$66,144	\$49,827	\$66,684	\$31,076
Total \$ Value as Inventory	\$30,302,051	\$34,802,547	\$40,100,415	\$44,037,128	\$45,371,637	\$39,756,084
% of Total Inventory	0.36%	0.27%	0.16%	0.11%	0.15%	0.078%

