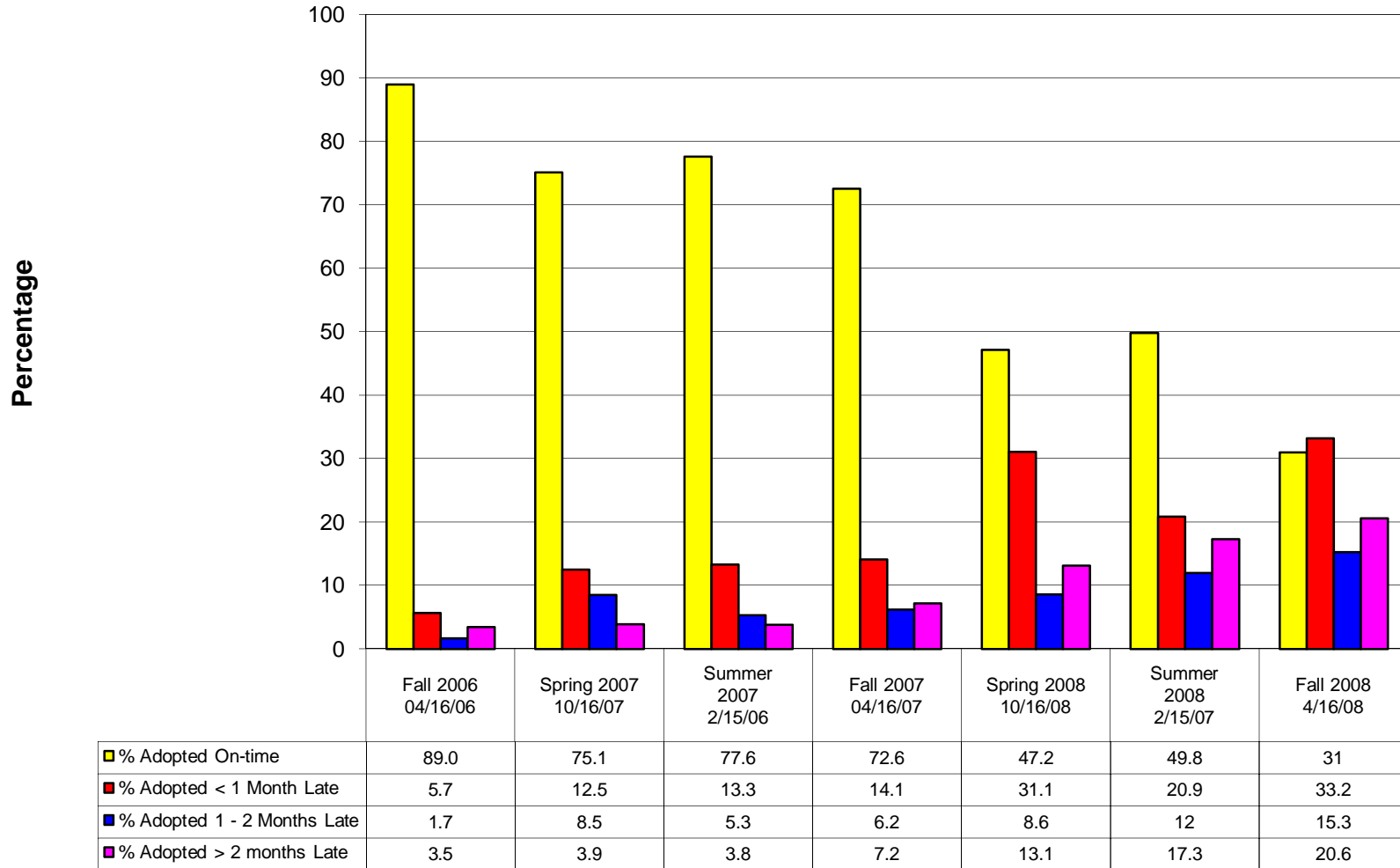


**FCCJ Textbook Adoptions Collegewide by Semester/Analysis of Adoption Timeliness
(Aux 2.0) (Target 100%)**



Term	Fall 2006			Spring 2007			Summer 2007			Fall 2007			Spring 2008			Summer 2008			Fall 2008		
Adoption Deadline	4/16/2006			10/16/2006			2/15/2007			4/15/2007			10/17/2007			2/15/2008			4/16/2008		
Total # Sections adopted:	%	Total	No.	%	Total	No.	%	Total	No.	%	Total	No.	%	Total	No.	%	Total	No.	%	Total	No.
A. # Adopted by Deadline:																					
DTC	100.0%	1306	1306	63.5%	625	397	52.9%	408	216	54.2%	535	290	71.1%	648	461	56.2%	402	226	34.0%	653	222
Kent	95.3%	846	806	97.2%	576	560	97.1%	280	272	86.0%	672	578	39.1%	754	295	48.4%	279	135	36.2%	676	245
North	96.1%	1052	1011	50.1%	712	357	72.6%	391	284	85.3%	611	521	57.8%	623	360	38.4%	284	109	40.8%	598	244
South	68.0%	1027	698	78.7%	916	721	85.2%	256	218	83.4%	833	695	75.6%	753	569	65.3%	349	228	34.1%	841	287
DWC	87.6%	315	276	75.6%	356	269	99.6%	253	252	99.7%	299	298	84.3%	198	167	51.4%	216	111	51.1%	262	134
Open Campus**	78.6%	565	444	94.7%	453	429	79.2%	399	316	18.4%	446	82	3.7%	1028	38	44.1%	839	370	4.7%	739	35
A. Subtotals	88.8%	5111	4541	75.1%	3638	2733	78.4%	1987	1558	72.6%	3396	2464	47.2%	4004	1890	49.8%	2369	1179	31.0%	3769	1167
B. # Adopted 1month late:																					
DTC	0.0%	1306	0	3.8%	625	24	26.7%	408	109	16.3%	535	87	8.3%	648	54	18.9%	402	76	23.6%	653	154
Kent	0.0%	846	0	0.3%	576	2	0.0%	280	0	10.3%	672	69	37.1%	754	280	24.7%	279	69	30.6%	676	207
North	2.5%	1052	26	31.0%	712	221	21.2%	391	83	7.4%	611	45	24.2%	623	151	14.4%	284	41	17.7%	598	106
South	20.7%	1027	213	15.7%	916	144	11.7%	256	30	1.3%	833	11	14.7%	753	111	17.5%	349	61	38.8%	841	326
DWC	6.7%	315	21	19.7%	356	70	0.4%	253	1	0.0%	299	0	11.1%	198	22	31.9%	216	69	21.4%	262	56
Open Campus**	6.2%	565	35	0.0%	453	0	11.8%	399	47	59.6%	446	266	61.1%	1028	628	21.5%	839	180	54.3%	739	401
B. Subtotals	5.8%	5111	295	12.7%	3638	461	13.6%	1987	270	14.1%	3396	478	31.1%	4004	1246	20.9%	2369	496	33.2%	3769	1250
C. # Adopted 2 Months Late																					
DTC	0.0%	1306	0	24.2%	625	151	12.5%	408	51	17.0%	535	91	8.0%	648	52	8.5%	402	34	8.1%	653	53
Kent	0.4%	846	3	0.3%	576	2	2.9%	280	8	1.9%	672	13	17.0%	754	128	20.4%	279	57	18.6%	676	126
North	0.9%	1052	9	14.5%	712	103	2.0%	391	8	1.5%	611	9	14.0%	623	87	37.0%	284	105	22.1%	598	132
South	4.1%	1027	42	3.8%	916	35	1.2%	256	3	5.4%	833	45	7.0%	753	53	7.7%	349	27	9.9%	841	83
DWC	0.3%	315	1	2.0%	356	7	0.0%	253	0	0.0%	299	0	2.0%	198	4	10.2%	216	22	21.4%	262	56
Open Campus**	5.7%	565	32	2.2%	453	10	4.3%	399	17	11.9%	446	53	2.0%	1028	21	4.8%	839	40	17.1%	739	126
C. Subtotals	1.7%	5111	87	8.5%	3638	308	4.4%	1987	87	6.2%	3396	211	8.6%	4004	345	12.0%	2369	285	15.3%	3769	576
D. # Adopted > 3 Months Late																					
DTC	0.0%	1306	0	8.5%	625	53	7.8%	408	32	12.5%	535	67	12.5%	648	81	16.4%	402	66	34.3%	653	224
Kent	4.4%	846	37	2.1%	576	12	0.0%	280	0	1.8%	672	12	6.8%	754	51	6.5%	279	18	14.5%	676	98
North	0.1%	1052	1	4.4%	712	31	4.1%	391	16	5.9%	611	36	4.0%	623	25	10.2%	284	29	19.4%	598	116
South	7.2%	1027	74	1.7%	916	16	2.0%	256	5	9.8%	833	82	2.7%	753	20	9.5%	349	33	17.2%	841	145
DWC	5.4%	315	17	2.8%	356	10	0.0%	253	0	0.3%	299	1	2.5%	198	5	6.5%	216	14	6.1%	262	16
Open Campus**	9.6%	565	54	3.1%	453	14	4.8%	399	19	10.1%	446	45	33.2%	1028	341	29.7%	839	249	24.0%	739	177
D. Subtotals	3.6%	5111	183	3.7%	3638	136	3.6%	1987	72	7.2%	3396	243	13.1%	4004	523	17.3%	2369	409	20.6%	3769	776

*Nassau included North Campus

**Includes A0720, A7300, C7300, G7200, D7300 for Fall/Spring Term (A0720 for Summer Term)

Note: This analysis considers Collegewide late added sections as a late adoption.